



Catchment Sensitive Farming (CSF) partnership

- CSF and Farmer Results from CSF Evaluation Report 2018 -

CSF EVALUATION REPORT 2006 – 2018: WATER QUALITY IMPROVEMENTS

A few ‘farmer’ highlights from the report ...

CSF Evaluation Report shows...

Eight in 10 farmers working with Catchment Sensitive Farming Officers (CSFOs) reported benefits gained:

- Environmental
- Financial - savings on fertiliser costs
- Reputational benefits - farm more environmentally-friendly

**CSFOs help famers to implement measures specific to the needs of their farm,
while preventing pollutants reaching local waterways**

CSF Evaluation Report shows...

**CSF's network of 20,000 farmers have taken action to drive down water pollution
– equivalent to 34 per cent of England's total farmland**

Participating areas across 12 years have seen reductions in agricultural pollutants:

- nitrogen levels down by 4%
- phosphorus levels down by 8%
- and 12.3% reduction in sediment

CSF Evaluation Report shows...

Network of trained CSF advisers have worked together with farmers across England to take 75,000 actions to reduce water pollution on farms by farmers:

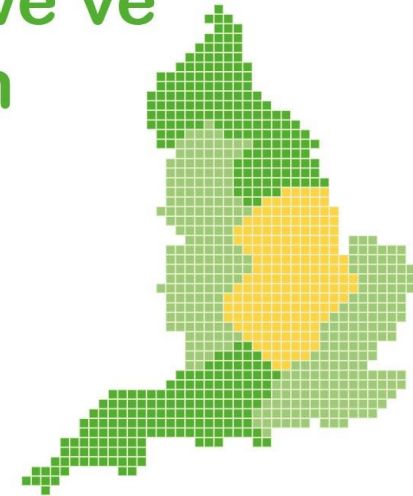
- Changing the way they apply pesticides
- Building new infrastructure
- Preventing pollutants from reaching waterways

SOME STATS AND FIGURES ON THE BENEFITS OF CSF WORK

We've delivered advice to nearly
20,000 farm holdings



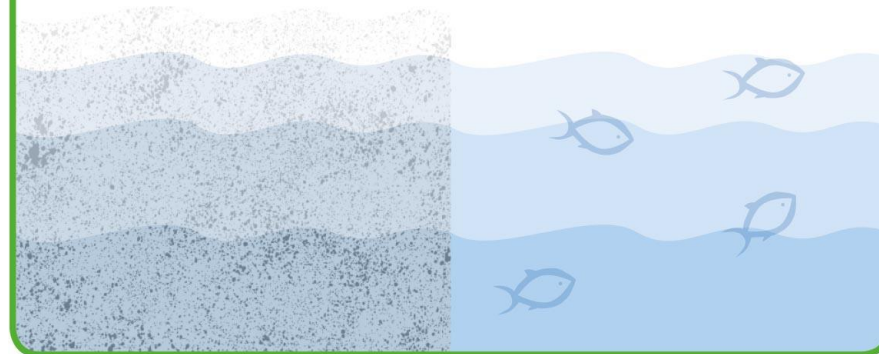
The farms we've
worked with
cover over
1/3
of England



Helped farmers take
70,000
positive
actions
to reduce
pollution



Our work has contributed to a
34% reduction
in pesticides in our rivers



**A clear solution
for farmers**

CATCHMENT SENSITIVE FARMING

Project Partners



CSF
Partners'
Group

4-8 X greater pollution reduction

from agri-environment scheme
farms that also implemented
CSF advice



Farmers have invested more than
£182m on farm
infrastructure



as a result
of our work



Engaged more than
1,170 next generation farmers



through the
Great Farm Challenge



**92% farmer
satisfaction**



for our
one-to-one
advice

**A clear solution
for farmers**

CATCHMENT SENSITIVE FARMING

Project Partners



CSF
Partners'
Group

See and read more ...

- [Video of Paul Tompkins talking about working with CSF](#)
- [Catchment Sensitive Farming Evaluation Report – Water Quality Phases 1 to 4 \(2006-2018\) \(NE731\)](#)
- www.gov.uk for Catchment Sensitive Farming partnership