

Briefing 1671

Rural economic statistics

Summary

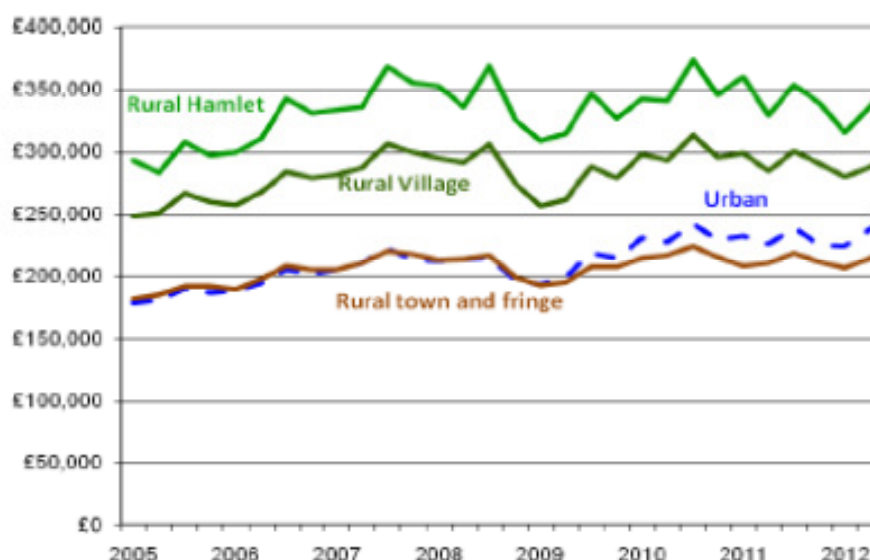
19% of England's population live in rural areas. House prices started to rise in the 3rd quarter of 2012 in rural and urban areas. Unemployment in rural areas has decreased over the last year. 25.9% of rural people are retired compared to 19.3% of urban. The percentage of the working age population claiming unemployment-related benefits remained at 1.9% in rural areas and 4.3% in urban areas. The redundancy rate is falling in both rural and urban areas and insolvencies have fallen over the year in rural areas but not elsewhere.

This paper is taken from the Defra Rural Economic Bulletin for the third quarter of 2012 which is at: <http://www.defra.gov.uk/statistics/files/Bulletin-Dec12.pdf>

In England 9.5 million people (19% of the population) live in rural areas; 39.7 million live in urban areas

House prices

Average house prices Q1/2005 to Q3/2012



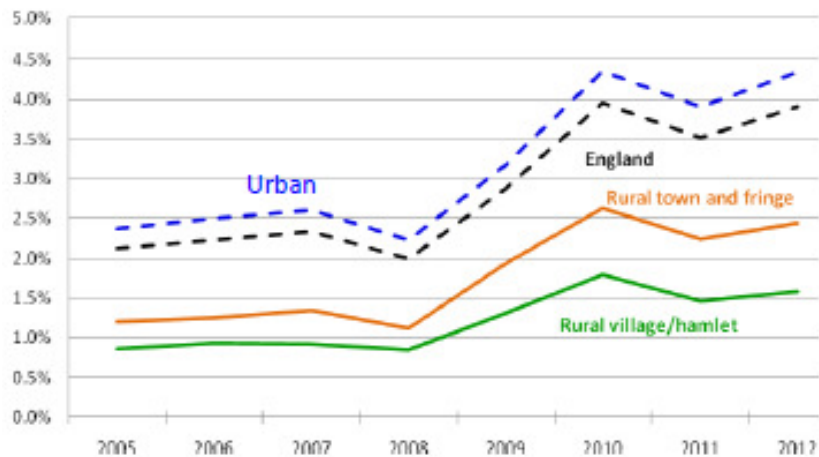
Employment

In Q3/2012 the employment rate in rural areas was 59.0%, 0.6 percentage points lower than in Q3/2011, whilst in urban areas it had increased to 58.8%. The unemployment rate in rural areas decreased to 4.8%, 4 percentage points lower than in urban areas. The inactivity rate (not in employment or unemployed) in rural areas has increased by 0.8 percentage points between Q3/2011 and Q3/2012, and is 2.5 percentage points higher than in urban areas. The retirement rate increased by 0.4 percentage points in rural areas, to 25.9%, compared with a 0.1 percentage point decrease in urban areas to 19.3% of people .

Claimant count

Between Q3/2011 and Q3/2012, the percentage of the working age population claiming unemployment-related benefits remained at 1.9% in rural areas and 4.3% in urban areas.

Claimant count (people claiming unemployment-related benefits) as % of working age population, Q1/2005 to Q3/2012



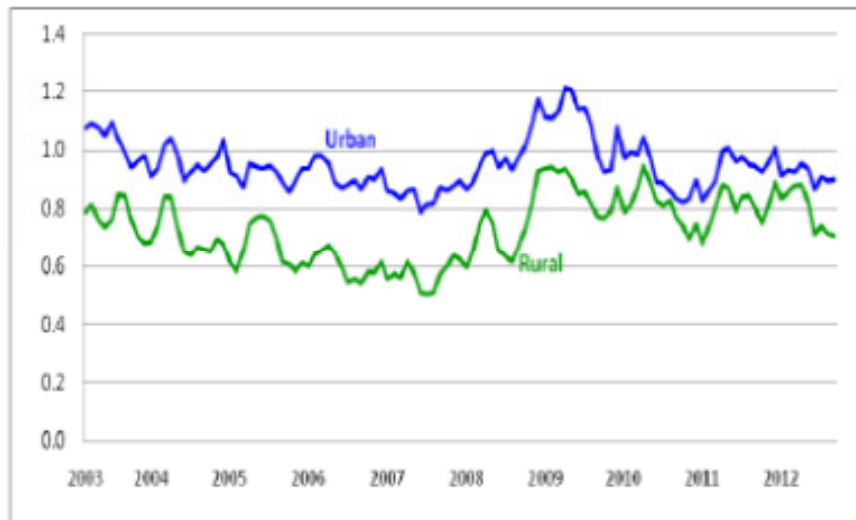
Redundancies

The redundancy rate in rural areas decreased from 6.1 redundancies per 1,000 workers in Q3/2011 to 5.7 in Q3/2012, whilst the redundancy rate in urban areas decreased from 5.8 to 5.2.

Business insolvencies

In Q3/2012 there were fewer business insolvencies per 1,000 businesses in rural villages and hamlets compared with Q3/2011; for businesses in rural town and fringe and urban areas the rate had remained the same.

Insolvencies rate per 1,000 businesses (smoothed quarterly average) Q1/2003 to Q3/2012



Source: pH Group/Defra

Alan Spedding, 15 January 2013

RuSource briefings provide concise information on current farming and rural issues for rural professionals. They are circulated weekly by email and produced by Alan Spedding in association with the Arthur Rank Centre, the national focus for the rural church. Previous briefings can be accessed on the Arthur Rank Centre website at <http://www.arthurrankcentre.org.uk/publications-and-resources/rusource>

RuSource is a voluntary project partly supported by donations and sponsorship.

© Alan Spedding 2013. This briefing may be reproduced or transmitted in its entirety free of charge. Where extracts are used, their source must be acknowledged. RuSource briefings may not be reproduced in any publication or offered for sale without the prior permission of the copyright holder.

If you would like to be put on the list for regular briefings or have any other queries about the service contact alan.spedding@btopenworld.com.